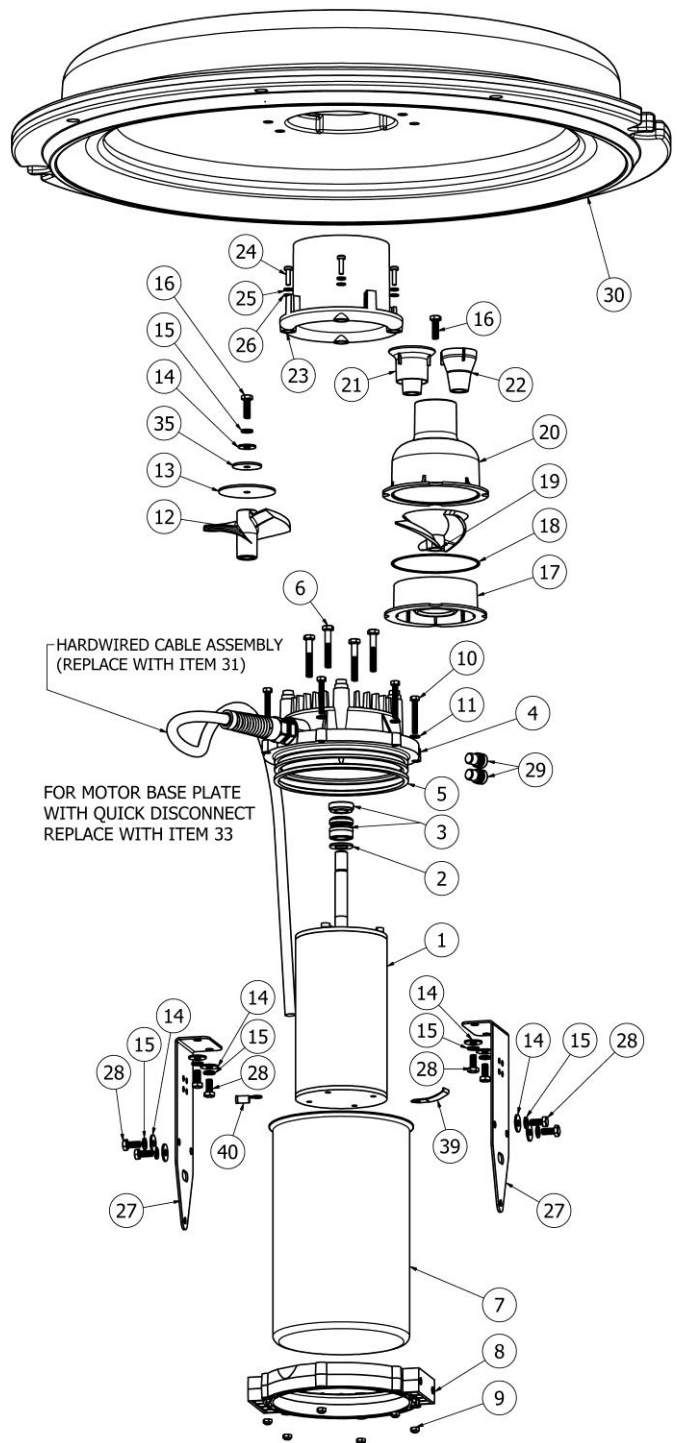


FRACTIONAL SERIES PARTS LIST & EXPLODED VIEW

Fractional Series Parts List			
ITEM	QTY	PART NUMBER	DESCRIPTION
1	1	30-0001	Motor - 1/2HP 115/230V/1Ph/50&60Hz.
2	1	28-0005	Mechanical Seal Washer
3	1	49-0054	Mechanical Seal
4	1	42-0100	Motor Base Plate
5	1	49-0056	O-ring, Motor Base Plate
6	4	22-0040	Bolt, M6-1 x 40mm Sealing Hex
7	1	47-0012	Motor Housing, 316 S/S
8	1	42-0101	Housing Ring
9	6	26-0006	Nut, M5 Nylon Locknut
10	6	22-0006	Bolt, M5 x 35mm Hex
11	6	28-0016	Washer, M5 Flat
12	1	42-0107	Prop, Open Throat
13	1	40-0013	Slinger Disc, Gemini
14	4	28-0023	Washer, M6 Fender
15	9	28-0021	Washer, M6 Split Lock
16	2	24-0022	Bolt, M6-1 x 20mm Hex
17	1	42-0104	Intake, Decorative Impeller
18	1	49-0055	O-ring, Intake
19	1	42-0105	Impeller, 60Hz. Mixed Flow
20	1	42-0103	Chamber, Decorative Pump
21	1	42-0110	Nozzle, Phoenix
22	1	42-0111	Nozzle, Rocket
23	1	42-0102	Chamber, Open Throat
24	4	24-0010	Screw, M4 x 16mm
25	4	28-0015	Washer, M4 Split Lock
26	4	28-0014	Washer, M4 Flat
27	2	40-0012	Bracket, Float
28	8	22-0041	Bolt, M6-1 x 14mm Hex
29	2	10-0004	Oil Plug
30	1	42-0042	Float
31	1	12-0125	Motor Base Plate Assy, Hardwired
32	2	GP5008	Cable Tie (SHOWN ON PAGE 6)
33	1	12-0126	Motor Base Plate Assy, Quick Disc.
34	1	MP6511	Pigtail, Quick Disc. (SHOWN ON PAGE 8)
35	1	40-0022	Slinger Disc, High Volume
36	1	15-0026	Screen (SHOWN ON PAGE 6)
37	1	BP2803B	Screw, 10 x 3/4" S/S Hex Head (SHOWN ON PAGE 6)
38	1	800-011	Washer, 10 x 1" S/S Fender (SHOWN ON PAGE 6)
39	1	47-0002	Ground Clip
40	1	178-003B	Connector, Ring
41	1	13-0001 13-0002	Motor Unit, Hardwired 115V/1Ph/60Hz 230V/1Ph/60Hz
42	1	13-0003 13-0004	Motor Unit, Quick Disconnect 115V/1Ph/60Hz 230V/1Ph/60Hz



TO PREVENT DAMAGE TO YOUR FRACTIONAL SERIES AERATOR

**DAMAGE CAUSED DUE TO FREEZING WILL NOT BE ELIGIBLE FOR WARRANTY CONSIDERATION
DO NOT ALLOW THE UNIT TO OPERATE "DRY" OUT OF THE WATER**

- **Never** operate the Fractional Series Fountain when not submersed (EXCEPT TO "JOG" FOR TESTING PURPOSES)
- Remove the unit from the water when temperatures are expected below 32°F (0°C)
- For longer unit life store the unit indoors at temperatures above 32°F (0°C)
- Operating Depth is 16in. (0.4m)
- Clean debris from screen and unit intake as necessary
- Inspect and clean the throat and nozzle components as required
- Annually clean and inspect the unit and cables for physical damage